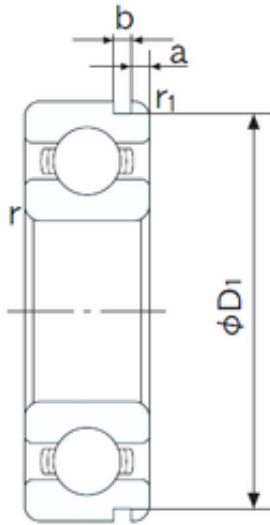




# SKF BEARING MANUFACTURING CO.,LTD.



50 mm x 110 mm x 27 mm NACHI 6310N deep groove ball bearings

Bearing No. 6310N

Size	50x110x27 mm
Bore Diameter	50 mm
Outer Diameter	110 mm
Width	27 mm
d	50 mm
D	110 mm
B	27 mm
C	27 mm
a	3.28 mm
b	2.7 mm
r min.	2 mm
r1 min.	0.5 mm
D1	106.81 mm
Weight	1.07 Kg
Basic dynamic load rating (C)	62 kN
Basic static load rating (C0)	38,1 kN
(Grease) Lubrication Speed	6200 r/min
Bore Type	Cylindrical Bore
Enclosure	Open
Configuration	Single Row
Bore Size	50 mm
Outside Diameter	110 mm
Width	27 mm
Fillet Radius/Chamfer	2 mm
r1	0.5 mm

6310N Bearing 2D drawings and 3D CAD models



## SKF BEARING MANUFACTURING CO.,LTD.

Groove Width	2.7 mm
Groove Diameter	106.8 mm
a (max)	3.3 mm
Dynamic Load Rating	62,000 N
Static Load Rating	38,100 N
Limiting Speed - Grease	6,400 rpm
Limiting Speed - Oil	7,500 rpm
Factor fo	13.1
Radial Clearance	0.006 to 0.023 mm
da (min)	60 mm
Da (max)	100 mm
Dx (min)	118 mm
ra (max)	2 mm
Cy (max)	5.4 mm